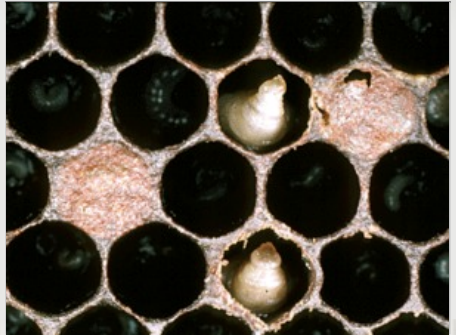


# Other brood diseases

## Sacbrood

A disease caused by a virus. It mostly affects the worker larvae and the pupa doesn't develop into an adult bee. Look for scattered cells in brood that have sunken or discoloured cappings, or cappings with tiny holes. Look for larvae that are pale yellow, dark brown or black. Infected larvae will be enclosed in a see through fluid filled sac and be shaped like a slipper!



sacbrood

Photo: Amazingbees (au)



Evidence of chalkbrood

## Chalkbrood

A disease caused by a fungus. It affects larvae and causes their death. The infected larvae look like a piece of white dusty chalk but then some darken to become dark bluegrey or black.

## Baldbrood

Caused by wax moth larvae making tunnels through the comb.

Look for patches of uncapped or partly capped cells with larvae growing in open cells.